

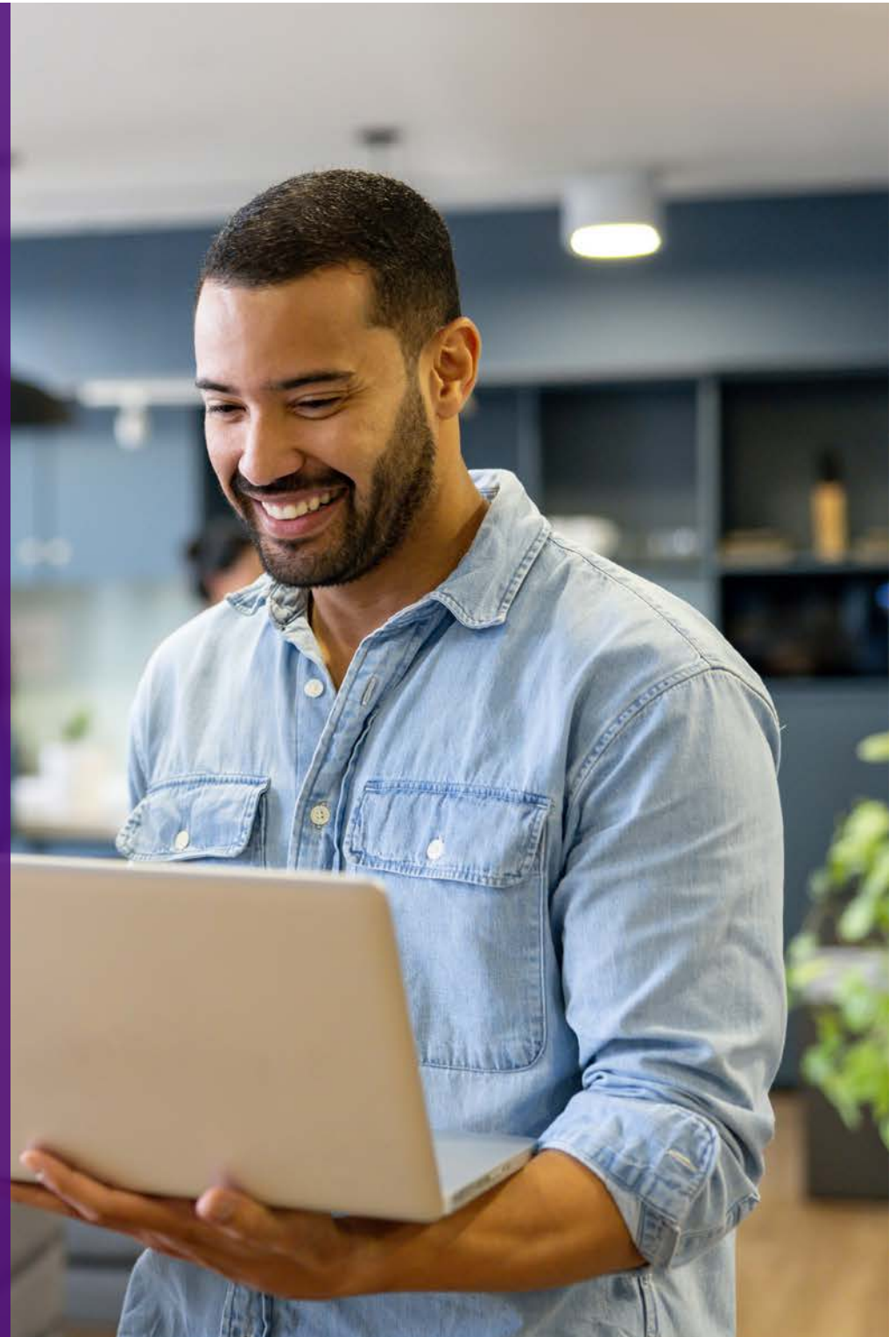


**A Year of Governmental Innovation
and Service to the State of Michigan**

2018 MPHI ANNUAL REPORT



**Advancing
Population Health
Through Public
Health Innovation
And Collaboration**





A Message From Our CEO



Collaboration is not always easy, yet the value goes far beyond the compromise. The best agreements require previously established relationships of trust, confidence, and respect. Quite simply, at MPHI, we value the relationships that support and facilitate the public health work that we do.

Renée Branch Canady, PhD, MPA
Chief Executive Officer, MPHI



Over 28 Years of Public Health Service: Creating a Healthier Tomorrow for All

Public Act 264 of 1989 established MPHI. Created in December 1989 MPHI supports the state's ability and capacity to tackle public health challenges.

Our goal, to improve the public's health, is still the heart of our work; guiding our projects and reaffirming our mission to advance population health through public health innovation and collaboration.



We Are Public Health Advocates

As a Public Health Institute, we leverage public resources, not just money but talent, energy, and expertise.

We work to build relationships within the government, public, and private sectors and maintain those partnerships to affect positive change in the public's health.



We Connect Communities to Government

MPHI is a social innovation organization and a trusted voice in the dialogue between communities, government, and policymakers.

We provide technical and administrative leadership to communities that have been awarded state and federal funds to ensure project integrity and appropriate use of the funds.



We Are a Single-Source Solution for Public Health

MPHI employs experts spanning a variety of areas, including analysis, capacity building, education, evaluation, facilitation, implementation, outreach, project management, and solutions development.

We provide expert consultation on the quick and efficient development, implementation, and completion of public health projects.



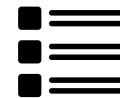
The Year in Numbers



566 Employees



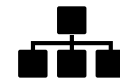
\$90M in Project Funding



335 Projects



21 Projects Added



453 Subcontracts




44 Funders



Addressing Social
Determinants of
Health to Improve
Care Coordination
and Health Outcomes





Supporting Health System Innovation

MPHI supports health system innovation by delivering actionable data and analytics. Since 1991, we have been on a public health mission that has included convening government, payers, providers, and communities. Patient-Centered Medical Homes (PCMH) and Community Health Innovation Regions are creating better ways to provide comprehensive, coordinated, and holistic care. MPHI is conducting rigorous analyses of Medicaid data that supports the incorporation of these models.

Michigan Primary Care Transformation (MiPCT) Demonstration

Michigan was an early adopter of PCMH models to make high-quality primary care accessible throughout the state. MiPCT, the first multi-payer PCMH program in Michigan, was the largest participant in the national Multi-Payer Advanced Primary Care Program. MiPCT operated from January 2012 to December 2016. MPHI was the state selected evaluator for MiPCT and in 2018 finalized a deep dive into the Medicaid data, analyzing five years of encounter data on over 500,000 beneficiaries served by over 1,000 primary care practices.

MPHI's analysis was especially important because it included Medicaid patient data. To date, few rigorous and large-scale evaluations of multi-payer PCMHs have included Medicaid patients in their analysis; although future evaluations of State Innovation Model (SIM) demonstrations will focus on Medicaid.

The study results among high-risk adults suggest that MiPCT was effective at reducing costs and inpatient hospitalizations while maintaining quality. The MiPCT Medicaid general adult population also started to see cost and hospital utilization reductions in 2015. In addition, MiPCT was equivalent to or better than comparison groups on most pediatric quality metrics across years (although the differences were narrowing over time).



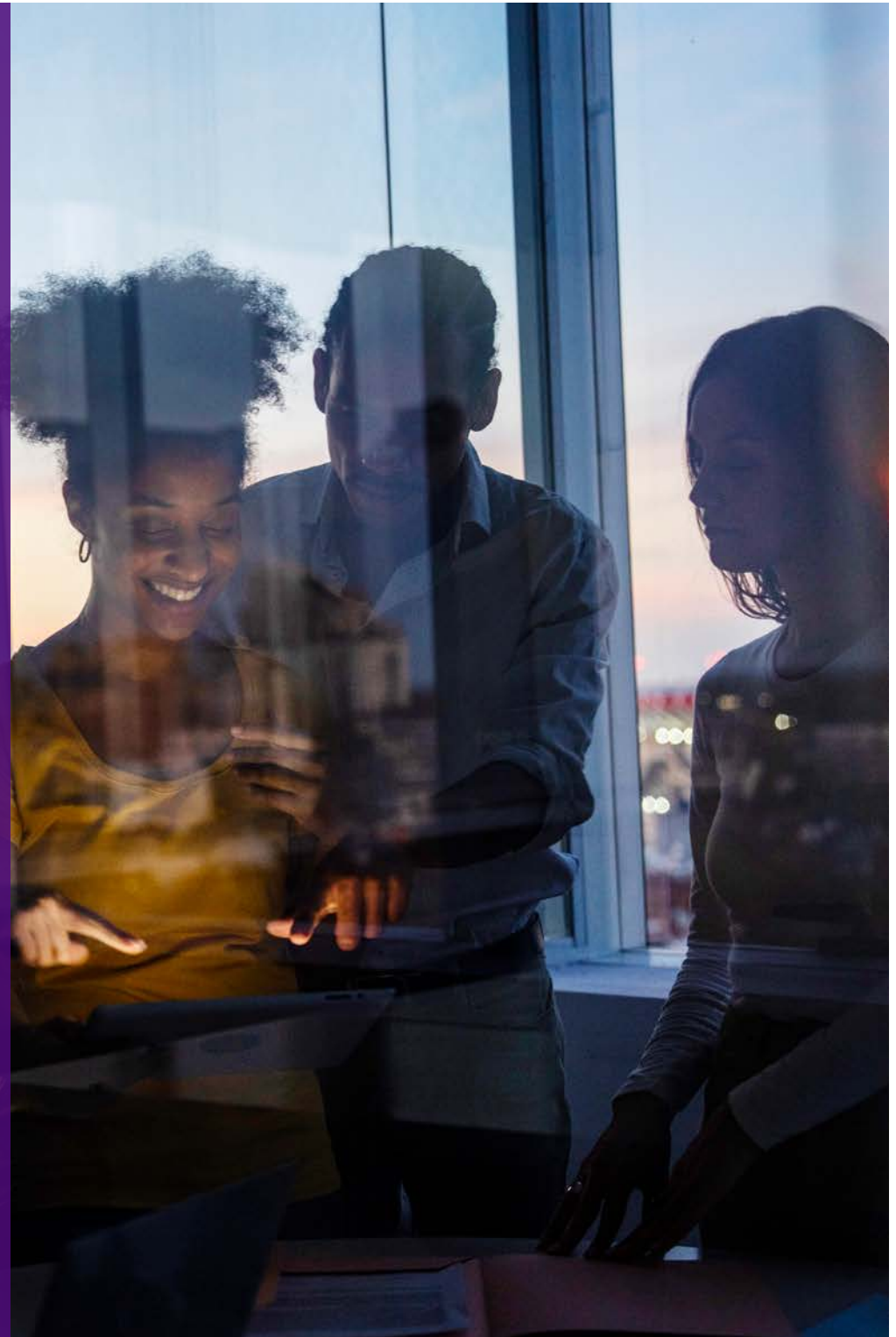
Michigan Pathways to Better Health

As a state-created, non-profit corporation, MPHI is able to apply for and receive grant funding, otherwise not available to state and local governments. Michigan Pathways to Better Health (MPBH) brought \$14,145,784 to Michigan between 2012-2016. MPBH was one of three programs highlighted by the federal Centers for Medicare and Medicaid Innovation when releasing their national program, Accountable Health Communities. During 2018, MPHI conducted a rigorous evaluation of Pathways outcomes related to Medicaid expenditures, hospitalization, and Emergency Department (ED) visits on behalf of the Michigan Department of Health and Human Services (MDHHS). MPBH participants showed cost reductions in all the ten post-intervention quarters. Cumulative cost savings were statistically significant starting at the 3rd post-quarter. In acute hospitalization, MPBH showed statistically significant reduced risk starting at the 8th post-quarter. Clients also found interaction with their community health workers highly valuable.

MPBH is aligned with MPHI's core values, as it seeks to eliminate social barriers to health care as well as providing education on managing chronic health conditions. Not only were clients provided with highly valued services, there was a reduction in medical expenditures on healthcare costs, such as hospitalization. Overall, these savings covered the cost of the intervention for net cost neutrality. Study results may be used to inform future strategies, particularly those related to the impact of social determinants of health on client experience and health care utilization and spending.



**Delivering Secure
Technology Solutions
to Those Who Need
It When They Need It**





Michigan Comprehensive Lead Exposure and Abatement Registry (MiCLEAR)

MPHI's Center for Technology Solutions is a team distinguished by innovation, quality, and providing high-level functionality while retaining security and compliance standards. The Michigan Comprehensive Lead Exposure and Abatement Registry (MiCLEAR) is a web-based platform built by MPHI to support MDHHS. MiCLEAR tracks the critical components of the lead abatement application process. Applications are entered, scored and prioritized, then ultimately approved or denied. Once approved, MiCLEAR manages the approval process, stores the risk-assessment and the lead test sample data captured during the investigation phase, and tracks which certified contractor performs the work. Once the abatement work is completed, users can record the invoices paid to the contractor, which funding source(s) paid for the abatement work, and formally close out the project.

The application also provides for a publicly available Lead Information Registry, which empowers the public to search for lead hazard information for rental properties that have been investigated or abated. MiCLEAR adds transparency and enables renters to feel confident that they are keeping themselves and their families safe.

In 2018, the MiCLEAR project was able to complete integration with MiLogin (the State of Michigan's single sign-on application). MiLogin integration increases application security and enables partner communities to access the application form without being on the State of Michigan's network. Our work with MDHHS on the MiCLEAR project directly impacts and protects Michigan residents against the threat of lead in their homes. MPHI has partnered with MDHHS for over 25 years on multiple technology-based projects. We work closely with the Department to design, develop, implement, and help manage solutions that work with MDHHS' technical infrastructure.

A close-up photograph of a person's hand holding a yellow pill bottle and a blister pack of pills. The background is dark and slightly blurred, focusing attention on the hand and the medication.

Michigan Drug Assistance Program (MIDAP)

MPHI and MDHHS launched an online system for the Michigan Drug Assistance Program (MIDAP) in April 2017 to process program applications. The MIDAP application helps ensure that people living with HIV and AIDS who are uninsured or under-insured have access to medication.

MPHI worked with MDHHS to design, build, and test the MIDAP application. MIDAP is integrated with MiLogin to provide single sign-on and is hosted at the State of Michigan. The system manages new applications, six-month renewals, and annual recertifications for over 2,500 program participants. The online system replaced a paper application process, streamlining application processing from an average of 12 days down to three days. Additionally, the on-time processing (14 business days) of applications has risen from 90% to 99%. Applicants have fewer lapses in coverage and incomplete applications are more quickly processed.

A presentation about the MIDAP system was delivered by MDHHS staff at the National Ryan White Conference on HIV Care and Treatment in Washington, D.C., in December 2018. MPHI and MDHHS continue to work collaboratively to support and enhance the system and respond to feedback from users and applicants.



Advocating
for Policies and
Practices That
Promote Health Equity





Working Towards Eliminating Racial Inequities in Our Communities

MPHI's Center for Health Equity Practice (CHEP) is committed to independence and integrity in all their work and serves as a trusted partner to MDHHS as well as to several national colleagues. We are recognized as a highly valued source of information, resources, and technical assistance on health equity and social justice issues. MPHI has provided Health Equity Workshops, Learning Labs, and consultation services to MDHHS. In 2018, over 100 MDHHS employees participated in MPHI's Health Equity workshop offerings and technical assistance opportunities.

MPHI also serves as the national technical assistance provider for 19 cities across the US as part of the BUILD Health Challenge. BUILD Health Challenge is a national program focused on increasing health equity for underserved populations by strengthening partnerships between community-based organizations, hospitals and health systems, local health departments, and others.

The Guy Thompson Parent Advisory Council

In the spring of 2018, MPHI's Center for Health Equity Practice (CHEP) partnered with MDHHS in the development, implementation, and coordination of the Guy Thompson Parent Advisory Council (GTPAC) for Child Protective Services

(CPS) policy. The GTPAC is a statewide council comprised of birth parents who have participated in services within the Child Welfare System. The goal is for GTPAC members to use their experiences and provide input regarding child welfare programs and policies. The development of the GTPAC consisted of working with MDHHS to create the purpose for the council, membership requirements, a recruitment process, and plan for the 2019 year. We facilitated the implementation and coordination of the council meetings. As part of the project, MPHI provides reimbursement to council members for their time, travel, and childcare. The GTPAC also has provided support for members to represent themselves and the council in outside opportunities throughout the state to ensure the inclusion of the voices of birth parents. The council sponsors members to participate in the Parents Partnering for Change Training, a two-day leadership training. Currently, the council includes 23 members and will meet quarterly in 2019 to continue their work.

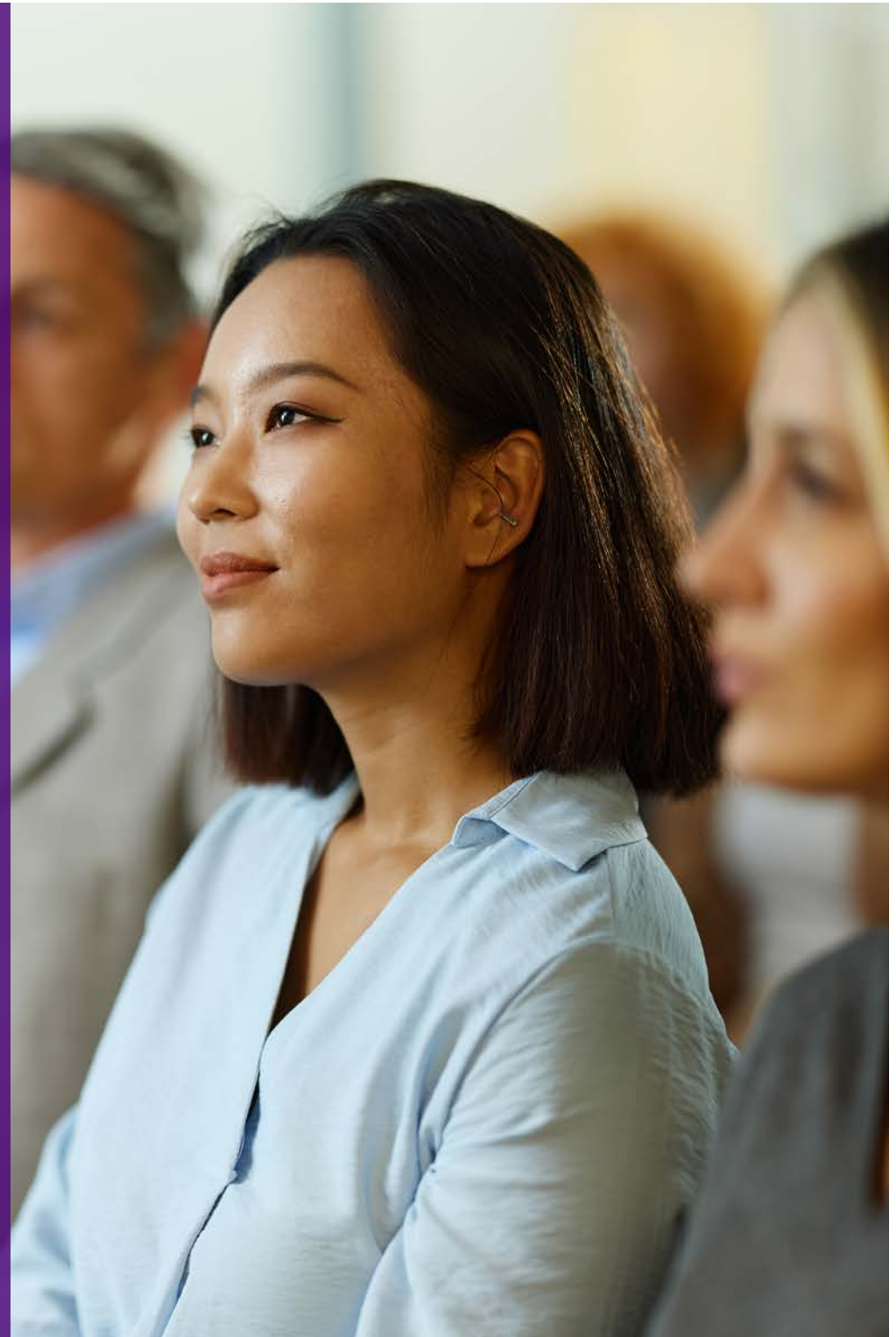


Parent Leadership in State Government

MPHI's Parent Leadership in State Government (PLISG) initiative provides training and support to a diverse group of parents, helping them become more effective advocates who can use their own experiences and voices to impact program planning and policy development. Parents participate in trainings that provide them with the skills to serve on advisory boards, committees, and other decision-making bodies. PLISG utilized a Michigan density map to represent the locations of trainings since 2008 to inform the recruitment process and target Michigan residents who were not traditional participants in past trainings. Outreach to diversify training participants included partnering with local and community-based organizations. MPHI's targeted efforts increased participation of Black or African American participants from 13.6% in 2017 to 49% in 2018. Additionally, MPHI's recruitment approach doubled the number of fathers trained from 10% in 2017 to 20% in 2018.



Providing Effective
Training and Continuing
Education for Busy
Health Professionals





Women, Infants, and Children (WIC)

For over 20 years, MPHI has partnered with the Michigan Women, Infants, and Children (WIC) program, offering a fully integrated conference planning solution along with a modernized approach to training hundreds of WIC employees in local agencies around the state. We support the efforts of WIC to enhance the nutritional and health status of low-income women, infants, and children. MPHI uses diverse training and technical assistance methodologies to build statewide capacity. These methodologies include computer-based and classroom training programs, learning modules, webinars, and conferences. The result is consistent training that promotes cost efficiency.

MPHI delivers the most current capabilities in online training, including continuing education and skill building options, allowing WIC to gain efficiency and maintain compliance without having to take on the financial and administrative burden of managing these processes. We work closely with WIC staff to ensure that we meet needs in real time.

In addition, MPHI supports WIC Division education, training, evaluation activities, subcontractor administration, technical assistance, and programmatic initiatives. The scope of our work is inclusive to all facets of WIC operations with the State of Michigan, WIC Division and its contractual relationships within the state.

During 2018, MPHI partnered with WIC on 51 educational trainings, 13 online courses, and the annual WIC Training and Educational Conference. A total of 2,455 participants across the state attended these activities, earning a total of 1,389 hours of continuing education in the areas of Nursing and Lactation Consultants.



Supporting State
and Local Health
Departments to
Ensure Quality in
Public Health Practices





Quality Improvement and Accreditation Readiness

MPHI's Center for Healthy Communities (CHC), in cooperation with MDHHS' Office of Performance Improvement and Management (OPIM), provides capacity-building support to Michigan's public health system and enables MDHHS to focus on what's important. This partnership assists Michigan's public health system build capacity to meet national standards for quality while helping local public health improve overall performance. Among its offerings, MPHI provides training, a mini-grant program, and technical assistance. Many of Michigan's local public health departments have received MPHI's assistance to build capacity within their agencies. Each of the seven nationally accredited health departments in Michigan have participated in one or more of MPHI's support activities.

MPHI's Quality Improvement (QI) Train-the-Trainer Workshop and Accreditation Readiness Mini-Grants help support a robust public health infrastructure in Michigan. Beginning in 2016, MPHI and MDHHS partnered to convene public health practitioners from state, local, and tribal public health agencies for QI Train-the-Trainer Workshops. These three-day workshops are provided at no cost for participants and are based on MPHI's Embracing Quality in Public Health: A Practitioner's Quality Improvement Curriculum Guide.

Nearly 100 public health practitioners in Michigan have completed the workshop.

MPHI also administers a \$10,000 Accreditation Readiness Mini-Grant and has awarded 16 mini-grants to local health departments in the past five years. In 2017, five health departments joined together to use mini-grant funding to support spreading QI capacity throughout each agency. Participants used what they learned in the Train-the-Trainer Workshop to lead groups of staff at each participating health department through QI projects, improving the efficiency and effectiveness of their processes.

By creating solutions that leverage our resources, relationships, and unparalleled public health perspective, our partnerships with local public health departments enable them to focus on the health and well-being of the communities they serve.



**Building
Multidisciplinary
Teams to Reduce
Preventable Deaths of
Infants and Children**





Michigan Child Death Review (CDR)

MPHI works with MDHHS to identify and support child health, safety, and welfare through the Michigan Child Death Review (CDR) project. We build and support multidisciplinary teams in all 83 Michigan counties. The teams meet regularly to review the circumstances surrounding the deaths of children in their communities. Child death review teams promote more efficient notification of child deaths, allowing mandated investigators to conduct more timely investigations. Team reviews can help identify problems regarding the coordination of investigations or clarifying the responsibilities of the various agencies involved.

MPHI's strong partnership with MDHHS has allowed for the increased sharing of critical knowledge across the state and throughout the nation. The MPHI Child Death Review process serves as the national model, replicated by many states.

MPHI's expertise extends to the National Center for Fatality Review and Prevention, a national resource and data center for Fetal and Infant Mortality Review and Child Death Review - part of MPHI's Center for National Prevention Initiatives.

MPHI also houses one of Michigan's Citizen Review Panels (CRP) and hosted the annual, National CRP Conference in 2018, bringing together volunteer members, staff, and child welfare employees from across the nation to engage in a national dialogue on the mechanics of implementing the congressional mandate, discuss challenges and opportunities, and exchange best practices.

New & Noteworthy



MPHI Lead Project Evaluation for Connected: An Initiative for Adolescent Mental Health

Connected is a two-year project that intends to reduce the impact of anxiety, depression and suicide among young people aged 10 to 24 in underserved communities, while also empowering youth to engage in community change. MPHI is leading the project evaluation that will illuminate the driving factors that contribute to successful implementation and replication of effective approaches. These lessons learned and resources will be shared nationally in support of empowering communities to enact positive change.

To read the full article, visit the [National Council for Mental Wellbeing](https://www.nationalcouncilonmentalhealth.org/connected) (URL: <https://bit.ly/3DTskB3>).

New & Noteworthy



MPHI's CEO gives keynote and receives Leadership Award at the Metro Detroit Midwives of Color Gala

Dr. Renée Branch Canady was the keynote speaker at the Metro Detroit Midwives of Color Gala and was presented with the Outstanding Leadership Award for providing thoughtful guidance, inspiring excellence and for leading with honesty, commitment and integrity. The gala celebrated the vast contributions of midwives toward the delivery of woman-centered care in Metro Detroit.

The Metro Detroit Midwives of Color is a non-profit, professional organization, inclusive of all minority midwives that serve women in the Metro Detroit area. The First Annual Midwifery Week Gala provided healthcare systems, birth professionals and organizations an opportunity to celebrate the vast contributions of midwives toward the delivery of woman-centered care in Metro Detroit. You can learn more by visiting the [Metro Detroit Midwives of Color website](https://bit.ly/41HRHh2) (URL: <https://bit.ly/41HRHh2>).

New & Noteworthy



MPHI Staff Attend and Present at ACCESS Arab Health Summit 2018

MPHI is a proud partner of ACCESS, a scientific biennial forum that serves as a major platform for academic and public health leaders, health and mental health professionals along with policymakers to share best practices and strategic solutions to improve health on a global scale and build research capacity. This year was the 8th ACCESS Arab Health Summit, and it served as a platform for discussions around health rights, public health research, capacity building, and community engagement as it relates to health and mental health issues among immigrants, refugees and vulnerable populations.

This year many of MPHI's staff and board members were in attendance, as well as serving as keynote speakers, moderators, and speakers for a variety of dynamic sessions including:

- Renée Canady, Chief Executive Officer
- May Darwish-Yassine, Chief Program Officer
- Paul Elam, Chief Strategy Officer
- Marijata Daniel-Echols, Program Director, CHEP
- Bengt Arnetz, Vice President, Board of Directors
- Phyllis Meadows, Board Member

For more information, please visit the [8th ACCESS Arab Health Summit website](https://bit.ly/4kLYC1v) (URL: <https://bit.ly/4kLYC1v>).

New & Noteworthy



Photo Credit: Hudson-Webber Foundation/Andy Sandifer Photography

MPHI's CSO Participates in Hudson-Webber Foundation's Safety and Justice Roundtable

MPHI's Chief Strategy Officer, Paul Elam, PhD recently participated in the Detroit-based Hudson-Webber Foundation's Michigan Safety and Justice Roundtable in Detroit.

On September 6 and 7, experts in juvenile and criminal justice gathered in Detroit to co-create a vision for effective and equitable youth and adult justice in Michigan. The convening was hosted by the Michigan Committee on Juvenile Justice, the Mackinac Center for Public Policy, and the Michigan League for Public Policy.

The roundtable brought together stakeholders with diverse perspectives from across the political spectrum to share promising practices, common challenges, and action items on a range of topics. Dr. Elam was invited as a plenary speaker to identify current issues and challenges related to youth diversion, reentry, and aftercare.

Dr. Elam is a national expert specializing in juvenile justice and equity, has a wealth of knowledge and experience measuring racial and ethnic disproportionality, and believes that sound public policy analysis should include an examination of whether all people are being treated fairly and equitably.

New & Noteworthy



How Do Organizations Working On Community Development Shift the Dialogue to Truly Create Change?

From the archives of Forward Community Investments, Dr. Renée Canady, CEO of Michigan Public Health Institute, shared her perspectives on transforming dialogue into meaningful change.



MPHI CFO Named One of Crain's Notable Women in Finance

Congratulations to our own Jana Dean for making it onto this year's Crain's Detroit Notable Women in Finance! Notable Women in Finance navigate restructurings, advise on acquisitions and lead mergers. Their superpowers are finding cost savings and new sources of revenue for their companies. They collaborate; they mentor.

To read the full article, visit the [Crain's Detroit Business website](https://bit.ly/4kTaWwX) (URL: <https://bit.ly/4kTaWwX>).



MPHI Board of Directors

Nick Lyon, BA

Bengt Arnetz, MD, PhD, MPH, MScEPI

Holly Jarman, PhD

James E. Blessman, MD, MPH

Renée Branch Canady, PhD, MPA

Beverly Allen, CPA

Tim Becker, CPA

Debra Furr-Holden, PhD

James Giordano, MBA

Stephen Lanier, PhD

Karen MacMaster, MPA

Jennifer Jordan, JD

Jenifer Martin, JD, BA

Sarah Mayberry, MPH

Phyllis Meadows, PhD, MSN, RN

Sue Moran, MPH

Angulique Outlaw, PhD

Lisa Stefanovsky, MEd